

Intelligent Devices
IDI 1300 Series
Technical Manual



4411 Suwanee Dam Road, Suite 510 Suwanee, GA 30024
T: (770) 831-3370 support@intelligentdevicesinc.com
Copyright 2011, Intelligent Devices, Inc. All Rights Reserved

Table of Contents

| | |
|---|----|
| 1. Revision History | 3 |
| 2. Overview | 4 |
| 3. Features..... | 4 |
| 3.1. Power | 4 |
| 3.2. LEDs | 4 |
| 3.3. DIP switches | 4 |
| 3.4. Serial Communications..... | 5 |
| 3.5. Analog Inputs | 6 |
| 3.6. Digital Inputs | 6 |
| 3.7. Digital Outputs..... | 6 |
| 3.8. Radar Option..... | 6 |
| 3.9. Photocell Option..... | 6 |
| 3.10. GPS Option | 7 |
| 3.11. Ethernet Communications | 8 |
| 4. Configuring the Controller | 8 |
| 4.1. Controller Firmware Update Procedure | 8 |
| 4.2. Setting the Serial Communications Address..... | 9 |
| 4.3. Setting the Ethernet IP Address – 1301 and 1321 only..... | 9 |
| 5. Configuring the Controller - WebDirect™ Option | 11 |
| 5.1. Downloading Web Pages and XML Files..... | 11 |
| 5.2. Displaying NTCIP Objects on Web Pages..... | 11 |
| 5.3. Changing Computer IP Settings | 13 |
| 6. Communicating with the Controller..... | 14 |
| 6.1. Communicating with the Controller via the Serial Ports | 14 |
| 6.2. Communicating with the Controller via the Ethernet Port..... | 14 |
| 6.3. Communicating with the Controller using WebDirect™ | 14 |
| 7. Troubleshooting / FAQs..... | 16 |
| 8. Specifications..... | 18 |
| 8.1. Hardware..... | 18 |
| 8.2. Software..... | 18 |
| IDI 1300 Controller - Parts Locations | 19 |
| IDI 1300 Controller – Cable Connector Details | 20 |
| IDI 1300 Controller - Physical Dimensions | 21 |
| IDI 1320 Controller - Parts Locations | 22 |
| IDI 1320 Controller – Cable Connector Details | 23 |
| IDI 1320 Controller - Physical Dimensions | 24 |
| GPS Sensor Wiring Diagram | 25 |

2. Overview

The IDI 1300 Series of NTCIP Field Device Controller is one of a family of controllers designed by Intelligent Devices for use in real-time control of Intelligent Transportation System devices.

The base model, the 1300, includes the following features:

- Single processor
- One RS-232 serial port (two on the 1320 and 1321)
- Two RS-232/RS-485 jumper-selectable serial ports
- Eight digital inputs
- Four analog inputs
- Four digital outputs
- Battery-backed RAM and real-time clock

The 1320 and 1321 models add 16MB of non-volatile FLASH memory, allowing for download and serving of web pages with appropriate firmware. The 1301 and 1321 models add an Ethernet port, allowing for communications over a standard 10Base-T Ethernet network.

3. Features

Refer to **IDI 1300 Controller - Parts Locations** or **IDI 1320 Controller – Parts Locations** at the end of this document for a pictorial representation of the locations of the controller parts referenced in the following sections.

3.1. Power

The 1300 board receives power through J1. The board accepts 9-30 volts, either AC or DC. Jumper JMP1/JP1, located near J1, should have the jumper set to the proper position based on whether AC or DC is being applied to J1. Pin 1 (square solder pad on bottom of board) is AC Neutral or DC negative. Pin 2 is AC live or DC positive. The board draws no more than 1 amp.

3.2. LEDs

The board has four LEDs located on the motherboard, labeled LED1 through LED4. LED1 is the Main Processor Heartbeat LED, and will blink at a steady rate whenever the Main Processor is operating properly. The operation of LED2 through LED4 will vary based on the firmware loaded into the Main Processor.

3.3. DIP switches

The DIP switches (S1) perform multiple functions. If all DIP switches are set to their OFF positions, and power is cycled or the RESET button is pressed, upon powering up the Main Processor will clear all of its memory and return all parameters to their factory default values.

Most firmware uses the DIP switches to set the serial communications address. Refer to Section 4.2, Setting the Serial Communications Address, for details of how to set this address.

Models 1301 and 1321 support Ethernet communications, and use the DIP switch address for the default IP address. Refer to Section 4.3 - Setting the Ethernet IP Address, below for details of setting the Ethernet communications parameters.

3.4. Serial Communications

Refer to **IDI 1300 Controller – Cable Connector Details** or **IDI 1320 Controller – Cable Connector Details** at the end of this document for details of the connector pinouts.

The 1300 series controllers support one RS-232 serial port, and two RS-232 / RS-485 selectable serial ports, while the 1320 series controllers support two RS-232 serial ports, and two RS-232 / RS-485 selectable serial ports. The table below indicates the names for the ports, the connectors that each port is associated with, the jumpers that must be set to select between RS-232 and RS-485 for the two selectable ports, and the jumpers used to terminate the RS-485, if necessary.

1300 Series

| Port | AKA | RS-232 Connector | RS-485 Connector | RS-232/RS-485 Jumpers | RS-485 Terminators |
|--------|--------|------------------|------------------|-----------------------|--------------------|
| Port 0 | Port C | P1 | J3 | JP2 | JP3,4,8,9 |
| Port 1 | Port B | P2 | J6 | JP5 | JP6,7,10,11 |
| Port 2 | Port D | P3 | n/a | n/a | n/a |

1320 Series

| Port | AKA | RS-232 Connector | RS-485 Connector | RS-232/RS-485 Jumpers | RS-485 Terminators |
|--------|--------|------------------|------------------|-----------------------|--------------------|
| Port 0 | Port C | P1 | J3 | JMP6 | JMP2-5 |
| Port 1 | Port B | P2 | J5 | JMP11 | JMP7-10 |
| Port 2 | Port D | P3 | n/a | n/a | n/a |
| Port 3 | Port A | P4 | n/a | n/a | n/a |

The RS-232 connectors P1 through P4 are DB9 male connectors configured as DTE, meaning a null modem cable is required to connect these ports directly to a DB9 male serial port on a computer. The pinout is as follows:

| Pin | Signal Name | Signal Description |
|-----|-------------|---------------------|
| 1 | DCD | Data Carrier Detect |
| 2 | RXD | Receive Data |
| 3 | TXD | Transmit Data |
| 4 | DTR | Data Terminal Ready |
| 5 | SG | Signal Ground |
| 6 | DSR | Data Set Ready |
| 7 | RTS | Request To Send |
| 8 | CTS | Clear To Send |
| 9 | RI | Ring Indicator |

The RS-485 connectors (J3 and J5 on a 1300, J3 and J6 on a 1320) support four-wire communications. To connect one of the RS-485 ports to a two-wire network, simply jumper TX+ to RX+ and TX- to RX-. The pinout for each port is as shown in the following table. Pin 1 is located

farthest counter-clockwise when the board is viewed from above, and can be identified from the bottom of the board by its square solder pad.

| Pin | Signal Name | Signal Description |
|-----|-------------|--------------------|
| 1 | SG | Signal Ground |
| 2 | TX+ | Transmit Positive |
| 3 | TX- | Transmit Negative |
| 4 | RX- | Receive Negative |
| 5 | RX+ | Receive Positive |

The function and communications parameters of each serial port vary based on firmware, but Port 2 typically supports PMPP NTCIP communications at 9600 baud, with 8 data bits, no parity and 1 stop bit.

3.5. Analog Inputs

The 1300 and 1320 support four analog inputs, routed to the controller via connector J6 (1300) or J5 (1320). The inputs are on pins 2 through 5, with pin 1 being signal ground, and pin 6 being +5VDC routed through a 100 ohm resistor R46 (1300) or R25 (1320). The inputs are rated for voltages from 0 to +5VDC, and have a 24k +/-1% input impedance. Full scale input is 4.8VDC +/-0.2VDC, resulting in a full-scale reading of 4800.

3.6. Digital Inputs

The 1300 and 1320 support eight digital inputs, routed to the controller via connector J4. The inputs are on pins 1 through 8, with pin 9 being signal ground, and pin 10 being +5VDC routed through a 100 ohm resistor R31 (1300) or R45 (1320). The inputs are rated for voltages from 0 to +5VDC, with a nominal switching threshold of 2.5VDC.

3.7. Digital Outputs

The 1300 and 1320 support four digital outputs, routed from the controller via connector J2. The outputs are on pins 2 through 5, with pin 1 being signal ground, and pin 6 being +5VDC routed through a 100 ohm resistor R49 (1300) or R34 (1320). The outputs are open-drain, low-true, and are rated for 100mA. J2 pin 1 should be connected to the ground of the devices being switched to prevent excess current from being conducted across the traces of the controller.

3.8. Radar Option

If supported by firmware, the controller can be interfaced to a Decatur SI-2 radar unit to automatically monitor traffic speed. The SI-2 should be configured according to the following table. To configure the SI-2, you will need: SI-2 RS232 programming cable; SI-2 configuration software (SI2D Config v1.7.exe); 12V power supply with a power switch; and SI-2 Configuration Instructions found in the file: SI2ConfigurationInstructionsRev07_02.pdf.

| Parameter | Value |
|----------------------------|-------|
| Speed Setup | MPH |
| Sensitivity Value | 17 |
| Update When Speed Changes: | Max |

| | |
|--------------------------------------|--------------------------|
| Override Update Rate with updates... | UNCHECKED (not selected) |
| updates every | 3 1/10 seconds. |
| Data Hold Time | 2 |
| Low Speed Cutoff | 5 |
| High Speed Cutoff | 200 |
| Cos Correction 1 | 0 |
| Cos Correction 2 | 0 |
| Report | Approach Targets |
| Baud Rate | 9600 |
| Direction Report | UNCHECKED (not selected) |
| TX String | 8n1 ASCII <D>[SSS.] <CR> |
| Poll String | 8n1 ASCII ["*P"]<CR> |

3.9. Photocell Option

Many Dynamic Message Sign applications use the optional Intelligent Devices photocell. The signals associated with the photocell wires are:

- Orange – to 5V
- Blue – to GND
- White – signal

White is from the white/blue pair; the white from the white/orange pair is not used.

The photocell typically connects to the IDI 1300 or 1320 card analog input 0 (J6 pin 5 for 1300, J5 pin 5 for 1320).

3.10. GPS Option

The GPS option allows the controller to receive location information from a small Global Positioning System sensor. The sensor receives timing information from multiple satellites located in low Earth orbit (LEO). Location information can be retrieved from the controller using NTCIP objects *essLatitude* and *essLongitude*. If the controller firmware supports WebDirect™ (1321 only), the location information can automatically be transferred to a map website such as Google maps, where the user can then view the location from varying zoom levels on a street map, a satellite map, or a hybrid of both maps.

Note that the GPS satellite radio signals do not travel through objects, so the system will only return valid location information if it has a direct line of sight to multiple satellites. For this reason, the GPS system will not work inside a building, and may experience periods when no valid location information is available. If valid location information is not received, the controller will return *essLatitude* = 90.000001 and *essLongitude* = 180.000001.

The GPS unit is a Garmin GPS18LVC.

Distributor: Navtech GPS
 Suite 230
 5501 Backlick Road
 Springfield, VA 22151

(703) 256-8900 / (703) 256-8988 (fax)

The GPS connects to the IDI 1300 or 1321 via a DB9 connector that requires 5V to power the unit. A ribbon cable is used to inject the 5V from the Digital Out port of the 1300 or 1320 (J2).

Reference IDI drawing 223-0001, "Garmin GPS 18LVC Wiring Diagram"

3.11. Ethernet Communications

The Model 1301 and 1321 controllers have an Ethernet port located on the Main Processor Board which supports Ethernet communications, and web-based communications if supported by the firmware. The NTCIP Ethernet communications is configured to support SP-Ethernet using UDP/IP on Port 300. Communications using NTCIP requires the use of an NTCIP-compliant central such as Intelligent Devices' Intelligent Control. Note that the controller does not support PMPP over Ethernet, so communicating to the controller using a serial-to-Ethernet converter or a serial port capture program such as COM IP is not supported. Refer to Section 4.3, Setting the Ethernet IP Address, for details of configuring the Ethernet communications parameters.

If the WebDirect™ option is supported by the firmware, the controller will have the ability to serve web pages over the Ethernet port. Communications to the controller requires only an Internet browser such as Microsoft Internet Explorer.

4. Configuring the Controller

4.1. Controller Firmware Update Procedure

The Controller Firmware can be updated in the field using a Rabbit programming cable, Rabbit Field Update software, and a computer running Windows. A Field Upgrade Kit, consisting of the Rabbit programming cable, Field Update software, and instructions, is available from Intelligent Devices.

Programming the Main Processor:

- 1) Apply power to the IDI Controller.
- 2) Connect the DB9 end of the programming cable to an IBM-compatible computer.
- 3) Connect the 10-pin plug of the programming cable that is labeled "PROG" to the 10-pin header on the Main Processor board. The red stripe on the cable should be aligned with the cutout corner of the silkscreened decal surrounding the 10-pin header on the processor board.
- 4) Start the Rabbit download utility by double-clicking the RFU.EXE file. Select File->Load Flash Image..., then browse to the provided Main Processor firmware file. The file will have a ".bin" extension. Once selected, click the OK button to start the download.
- 5) Upon completion of the file download, remove the programming cable from the Main Processor board and press the reset button or cycle power on the controller. LED4 (the one closest to the board edge) should come on steady for a few seconds while the translator reinitializes its memory. Wait for LED1 to start blinking to indicate that the processor is running properly.

NOTE: When a new version of firmware is loaded into the Main Processor the controller will clear its memory, and all settings will revert to factory defaults. If the controller being programmed has Ethernet and an alternate IP address has been programmed, it will need to be reloaded. See Section 4.3, Setting the Ethernet IP Address, below for details.

4.2. Setting the Serial Communications Address

Most firmware uses the DIP switches to set the PMPP communications address. This is the address that is used when communicating with the controller via NTCIP over any of the RS-232 or RS-485 serial ports. The address is set in binary, with each switch being assigned a value as follows:

DIP Switch Address Settings

| Switch | Value |
|--------|-------|
| 1 | 1 |
| 2 | 2 |
| 3 | 4 |
| 4 | 8 |
| 5 | 16 |
| 6 | 32 |
| 7 | 64 |
| 8 | 128 |

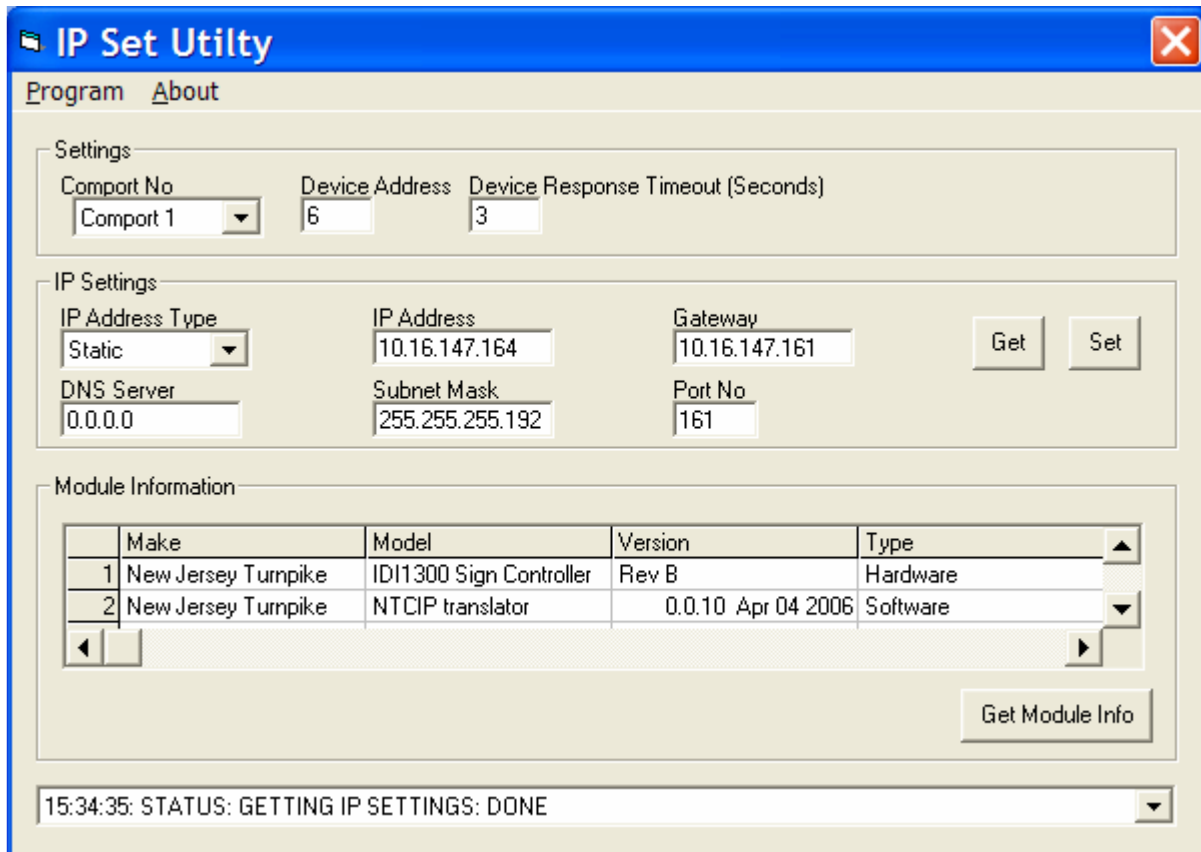
For any switch that is closed, the value associated with that switch is added to the Address. For example, closing switches 3 and 5 will result in the address being set to 20 (switch 3 = value 4; switch 5 = value 16; 4 + 16 = 20). In this way, addresses from 1 to 255 can be set. Note that some firmware use switches 7 and 8 for configuration purposes; in these systems, the maximum address that can be set is 63.

Once the desired address has been set on the DIP switches, power to the controller should be cycled, or the RESET button pressed, to have the controller read and apply the new address.

4.3. Setting the Ethernet IP Address – 1301 and 1321 only

Model 1301 and 1321 Controllers support NTCIP communications via Ethernet over the RJ-45 jack on the Main Processor board. Upon first being powered up after initializing its memory, the controller sets its IP address to 192.168.1.x, where x is replaced by the address set on the DIP switches. This can be modified using the IP Set Utility, but it will revert back to the default address plus the DIP switch address after: a) powering up with all DIP switches set to 0; b) loading new firmware into the Main Processor; or c) losing power from the battery.

The IP Set utility can be used to set the IP parameters of the controller, or to read the parameters, or to read the software version in the controller. When run the utility looks like this:



First, select the Comport No. from the drop down menu. Connect a null modem cable between the PC com port and the controller’s P1 connector. Enter the Device Address (set by the controller card DIP switches) at the top of the IP Set window.

Click “Get Module Info” to verify the connection and the software version loaded into the translator. The table should fill in with data, and the second line should show the software version. Click on the “Get” button to see the IP address currently programmed into the translator.

To set an IP address, select the IP Address type as Static, enter the Subnet Mask and Gateway and Port number, and enter a unique IP Address for this translator. The DNS server address is not used and can be left zeroes.

NOTE: After setting the IP address, the controller must be reset or power-cycled before it will begin to use the new IP address.

For communications using an Ethernet cellular modem, the IP address should be set to 192.168.1.1 and the modem should be set to forward all traffic to that address. The modem’s local address can be any compatible subnet address (192.168.1.2 ... 192.168.1.254).

Any time a different firmware version is loaded, at the next power up the translator will re-initialize its memory and the IP settings will have to be reprogrammed.

5. Configuring the Controller - WebDirect™ Option

WebDirect™ is an option that allows a user with access to the web to monitor and control the device attached to the 1321. This firmware option is only available with 1321 controllers, as the web pages are stored in the FLASH memory and accessed using http over the Ethernet port.

5.1. Downloading Web Pages and XML Files

Web pages and XML files can be downloaded to the controller using FTP (file transfer protocol) software such as FlashFXP. A typical session would go as follows:

1. Verify that you have a valid connection to the device. To connect to a controller using Ethernet, connect a crossover cable between the computer and the controller. Alternatively, a standard Ethernet cable can be used with a hub or switch to allow a connection to the controller. Cycle power to the controller to ensure that the Ethernet interface on the controller is properly configured. If properly configured, the green LED labeled DS1/LNK next to the Ethernet connector will be lit.
2. Verify that the computer is configured to have a static IP address. Refer to Section 5.3, Changing Computer IP Settings, for information on configuring your computer to have a static IP address.
3. Open FlashFXP. The left-hand window shows the files on the computer. The right-hand window will be used to show the files on the controller.
4. To connect to the controller, click the Lightning Bolt icon, then select Quick Connect. On the General tab, enter the IP address of the device in the "Server or URL:" field. For devices connected by a wireless modem, this will be the IP address of the wireless modem. The IP address will be in the form of four numbers from 1 to 255 separated by periods (e.g., 192.168.1.1). Next, enter the User Name and Password for the device and click the Connect button. You should contact Intelligent Devices for help if you have forgotten your password. The right-hand window should now show the files that are pre-programmed into the controller, along with the A: folder. If the A folder is not shown, press the Refresh icon above the right-hand window.
5. Double-click on the A folder. This is where the user-downloadable web pages are stored. Click on one of the files, then hit Ctrl-A to select all files. Locate the LICENSE.XML file, hold down the CTRL key, and click on the file to deselect the file. Press the Delete key to delete all the files except the LICENSE.XML file. Do not delete the file named LICENSE.XML, as this file enables the WebDirect™ function on the computer.
6. In the left-hand window will be seen the files available for download from the computer. Use the browse controls to reach the directory where the web files to be transferred are located. Select the files to be transferred from the computer in the left-hand window using the cursor along with the Shift and Ctrl keys. To select all files, press Ctrl-A. Once all files have been selected, click the "Transfer Selected" icon above the left-hand window. The files should be transferred to the controller, and appear in the right-hand window.

5.2. Displaying NTCIP Objects on Web Pages

Using WebDirect™, it is possible to display any NTCIP object on a web page without having to modify the firmware. This function is performed through the use of XML files that can be downloaded to the FLASH memory on the 1321. First, the NTCIP object must be referenced in the file VARLIST.XML. A sample section of the file is listed below:

```

<auxIOValue>1.3.6.1.4.1.1206.2.1.1.3.1.5.2.1<t>2</t></auxIOValue>
<dmsSignType>1.3.6.1.4.1.1206.4.2.3.1.2<t>10</t></dmsSignType>
<currentmsg>1.3.6.1.4.1.1206.4.2.3.5.8.1.3<t>8</t></currentmsg>
<shortErrorStatus>1.3.6.1.4.1.1206.4.2.3.9.7.1<t>3</t></shortErrorStatus>

```

Each line begins with a name tag enclosed in a left and right arrow. For example, the second line above defines the variable “dmsSignType”. Following the name tag is the OID, as defined in the NTCIP standard documents. After the end of the OID, a tag <t> is placed to indicate the type of the object. In this case, the type is 10, ENUM. The types supported are as follows:

```

1   BOOLEAN
2   INT1, INT2, INT4, SIGN_INT1, SIGN_INT2, SIGN_INT4
3   BIT STRING (1 based, i.e., for bit 0, use 1; uses ENUMS.XML)
   Objects of this type must be referenced using one of the bit-based
   references listed below: either no indexes and a bit number, or two
   indexes and a bit number.
4   OCTET
5   NULL
6   OID
7   OBJECT DESCRIPTION
8   MESSAGE MULTI STRING
9   REAL
10  ENUM (uses ENUMS.XML)
16  Sequence
17  Set
18  Sequence of
93  Reg point
96  Owner string
97  Display string
98  Opaque
99  COUNTER
100 IP Address
101 Message ID code
102 Message Activation Code
103 Position reference
104 Date/time - converts the time in seconds to the US format:
   month day, year HH:MM:SS
105 volts - divides the voltage by 100 and will then convert the
   result to the ASCII form: "nnn.mm V".
106 Latitude and longitude - Format GPS latitude or longitude into
   an ASCII decimal string: 34.5678 or -80.1234
107 Temperature - displays deg C and deg F

```

After the type come the end tags for type and name, which are indicated by a forward slash followed by the tag.

Objects of the type ENUM are stored as numbers, but have text strings associated with each number. A separate file, ENUMS.XML is used to define the text strings to be used for each value of each object. For the object dmsSignType defined above, the ENUMS.XML file shows:

```

<dmsSignType>
  <t1>Other</t1>
  <t2>BOS</t2>
  <t3>CMS</t3>
  <t4>VMS Character Matrix</t4>
  <t5>VMS Line Matrix</t5>

```

```

        <t6>VMS Full Matrix</t6>
        <t129>Portable Other</t129>
        <t130>Portable BOS</t130>
        <t131>Portable CMS</t131>
        <t132>Portable VMS Character Matrix</t132>
        <t133>Portable VMS Line Matrix</t133>
        <t134>Portable VMS Full Matrix</t134>
    </dmsSignType>

```

Note that, similar to the tags in the VARLIST.XML file, all entries in the ENUMS.XML file have a start tag and an end tag.

The web pages reference objects by use of the #echo directive, as shown in the example below:

```

<p class="item">Sign Type:</p>
<p class="celldata" id="txversion"><!--#echo oid="dmsSignType" --></p>

```

To reference the fan failure bit in shortErrorStatus, use the line below. The ENUM associated with this object would then only reference values of 0 or 1, based on whether bit 11 is clear or set. Note that bit-string objects are limited to 16 bits.

```

<!--#echo oid="shortErrorStatus_0_0_11" -->

```

Accepts name and index options as follows:

- name -> name without any index
- name_1 -> name with one index
- name_1_2 -> name with two indexes
- name_1_2_3 -> name with two indexes and a bit number (1-based)
- name_0_0_1 -> name with no indexes and a bit number (1-based)

After VARLIST.XML, ENUMS.XML and any web pages have been modified, they must be transferred to the FLASH drive on the 1321 card as described in Section 5.1 – Downloading Web Pages and XML Files. Power to the controller must then be cycled to have the controller read the new files.

5.3. Changing Computer IP Settings

Setting a Static IP Address

To connect directly to the controller using a crossover cable, the computer must be set to use a static IP address using the following steps:

1. Click on Start, then select Control Panel. From the Control Panel window, select Network Connections, then Local Area Connection. On the General tab, select Internet Protocol, then click the Properties button.
2. On the General tab, click the “Use the following IP address” radio button. Under IP address, enter 192.168.1.3. The Subnet Mask will automatically change to 255.255.255.0, which is fine. Click the OK button to accept the IP address.
3. Click the Close button to close the Local Area Connection Properties window.

Automatically Obtaining an IP Address

The computer can be set to automatically obtain an IP address from a DHCP server on the network by using the following steps:

1. Click on Start, then select Control Panel. From the Control Panel window, select Network

Connections, then Local Area Connection. On the General tab, select Internet Protocol, then click the Properties button.

2. On the General tab, click the "Obtain an IP address automatically" radio button. Click the OK button to accept the change.
3. Click the Close button to close the Local Area Connection Properties window.

6. Communicating with the Controller

6.1. Communicating with the Controller via the Serial Ports

The serial ports of the controller that have been configured to support NTCIP communications use PMPP. An NTCIP-compliant central such as Intelligent Devices' Intelligent Control is required to communicate to the controller using these ports. To connect a computer directly to one of the RS-232 serial ports, use a null modem cable with two female ends. P1 is typically configured as a port that supports NTCIP, and is configured for 9600 baud, with 8 data bits, no parity, and 1 stop bit. Note that the PMPP address is set on the DIP switches as detailed in Section 4.2, Setting the Serial Communications Address.

6.2. Communicating with the Controller via the Ethernet Port

Model 1301 and 1321 controllers have an Ethernet port which supports NTCIP communications. An NTCIP-compliant central such as Intelligent Devices' Intelligent Control is required to communicate to the controller using these ports. A crossover cable is used to connect a computer directly to this port, or the controller can be connected to a hub or switch using a standard cable. The controller will then be accessible at the IP address that was previously set on the DIP switches or was set as detailed in Section 4.3, Setting the Ethernet IP Address. The Transport Type should be set to UDP/IP, and the Server Port Number should be set to 300.

NOTE: when using Intelligent Devices' Intelligent Control or DeviceTester the Device Address setting in the computer software should be set to 0.

6.3. Communicating with the Controller using WebDirect™

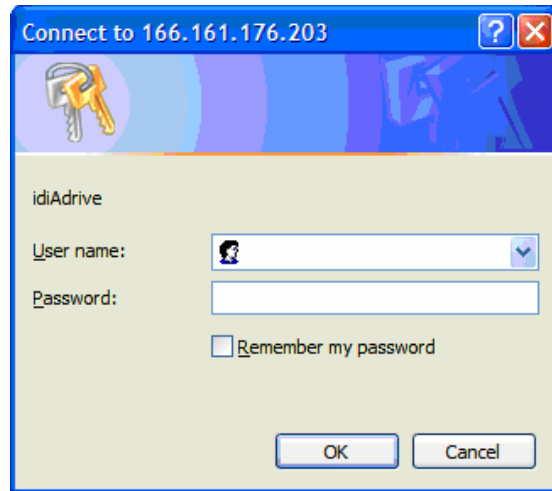
If the firmware supports WebDirect™, the user can access the controller via the Ethernet port using a web browser such as Internet Explorer.

Before accessing the controller, Internet Explorer should be configured to properly retrieve the web pages.

1. Open Internet Explorer. From the Menu toolbar, select Tools->Internet Options... The Internet Options window will appear.
2. Select the General tab. In the Temporary Internet Files section, click on the Settings... button. The Settings window will appear.
3. At the top of the Settings window, click the "Every visit to the page" button. This will ensure that Internet Explorer will retrieve the most recent page available from the controller, rather than presenting a previous page that has been saved.

Once Internet Explorer has been properly configured, to connect to the sign, simply type the IP address of the modem (e.g. 192.168.1.1) into the Address bar of Internet Explorer. Internet

Explorer will automatically place <http://> before the IP address. The sign will respond with a login screen:



Type the User Name, press TAB, then type the Password and click OK.

The controller will respond with the Main Menu web page, which will vary based on the web site that has been downloaded to the controller.

7. Troubleshooting / FAQs

Why did the controller lose all its information/settings/messages?

On a power up or reset, the controller will reinitialize its memory (and lose all downloaded messages) in these cases:

- 1) DIP switches are all off (address is zero)
- 2) The software version number is different since last startup (new code downloaded)
- 3) The database checksum is bad (usually caused by a dead battery)

Note that just changing the address on the DIP switches won't reinitialize the controller (unless they are set to zero at power up).

The controller does not respond to communications over an RS-232 serial port.

1. Verify that the cable is the correct type. For connecting a standard PC to the controller, a null modem cable should be used.
2. Verify that the jumpers for the port are set to RS232. Refer to Section 3.4 – “Serial Communications” for details of the jumper settings.
3. Verify that the PMPP address is properly set on the DIP switches. Refer to Section 4.2 – “Setting the Serial Communications Address” for details.
4. Verify that the serial port supports NTCIP communications.
5. Verify that the communications settings are correct for the serial port. The parameters are typically 9600 baud, 8 data bits, no parity, and 1 stop bit, but these can be different in custom firmware.

The controller does not respond to communications over an RS-485 serial port.

1. Verify that the jumpers for the port are set to RS485. Refer to Section 3.4 – “Serial Communications” for details of the jumper settings.
2. Verify that the PMPP address is properly set on the DIP switches. Refer to Section 4.2 – “Setting the Serial Communications Address” for details.
3. Verify that the serial port supports NTCIP communications.
4. Verify that the communications settings are correct for the serial port. The parameters are typically 9600 baud, 8 data bits, no parity, and 1 stop bit, but these can be different in custom firmware.

The Ethernet DS1/LNK LED does not light.

1. Verify that the proper cable is being used. For connecting a PC directly to the controller, a crossover cable should be used. When connecting the controller to an Ethernet hub or switch, a straight cable should be used.
2. When connecting to the controller directly from a computer using a crossover cable, the computer must be set to use a static IP address. Refer to Section 5.3 – “Changing Computer IP Settings”.

The controller does not respond to communications over the Ethernet port.

1. Verify that the DS1/LNK LED next to the Ethernet jack is on. If this LED is not on, the controller is not properly connected to an Ethernet network. Refer to “The Ethernet DS1/LNK LED does not light” above for details of troubleshooting this problem.

2. Verify that the IP address is properly set. Refer to Section 4.3 – “Setting the Ethernet IP Address” for details of how to determine and modify the IP address.
3. Verify that the DC power to the controller is 12VDC or higher. The Ethernet option may not operate properly at lower voltages.
4. Ping the controller to verify proper communications. From a PC, go to Start->Run. Type “cmd”, then press the OK button. A DOS window will appear. At the prompt, type ping <IPADDR>, then press <Enter>. <IPADDR> is to be replaced by the IP address, e.g. 192.168.1.1. The window will indicate “Pinging 192.168.1.1 with 32 bytes of data:” If the communications is successful, there will be four responses showing the time required to respond: “Reply from 192.168.1.1: bytes=32 time=3ms TTL=64”, followed by a summary of the results of all four requests. If the communications is unsuccessful, the window will indicate “Request timed out”, followed by the summary.
5. Verify that the NTCIP Central software is using SP-Ethernet, rather than PMPP over Ethernet. With Intelligent Devices’ Intelligent Control and DeviceTester software, this is done by ensuring that “CDPD Mode” is not selected for the Connection Type.
6. When using Intelligent Devices’ Intelligent Control or DeviceTester software, verify that the Device Address is set to zero (0).

The readings from the Analog Inputs (battery voltage, AC voltage, photocells) are low.

JMP1, the AC/DC selector, is in the AC position. In this position, a diode is placed in the ground path of the incoming power, resulting in a voltage drop. If the board is being powered from a DC voltage source, place the jumper in the DC position and the problem will be corrected. If the board is being powered from an AC voltage source, make sure that it is an isolated source (such as a transformer that does not have its output referenced to its input), and then connect the ground reference for the system to the ground pin on the Analog Input connector (J5 pin 1).

Using WebDirect™, the only page that is displayed shows “Web services not enabled.”

If the firmware loaded on the controller supports WebDirect™, it will check the FLASH A: driver for a file named LICENSE.XML to determine if WebDirect™ is enabled. This file is unique to each controller, and must be present for web services to function.

Using WebDirect™, permanent messages are displayed as “P001”, “P002”, etc.

The controller defaults to these values until the permanent messages are loaded from the PERMMSGS.XML file.

1. Reload the messages from the file by performing a hard initialization. Set all the DIP switches to OFF, then press the RESET button. The firmware will then load the permanent messages from the PERMMSGS.XML file. When LED4 turns off, set the address on the DIP switches, then press the RESET button. The permanent messages should now be loaded properly.

8. Specifications

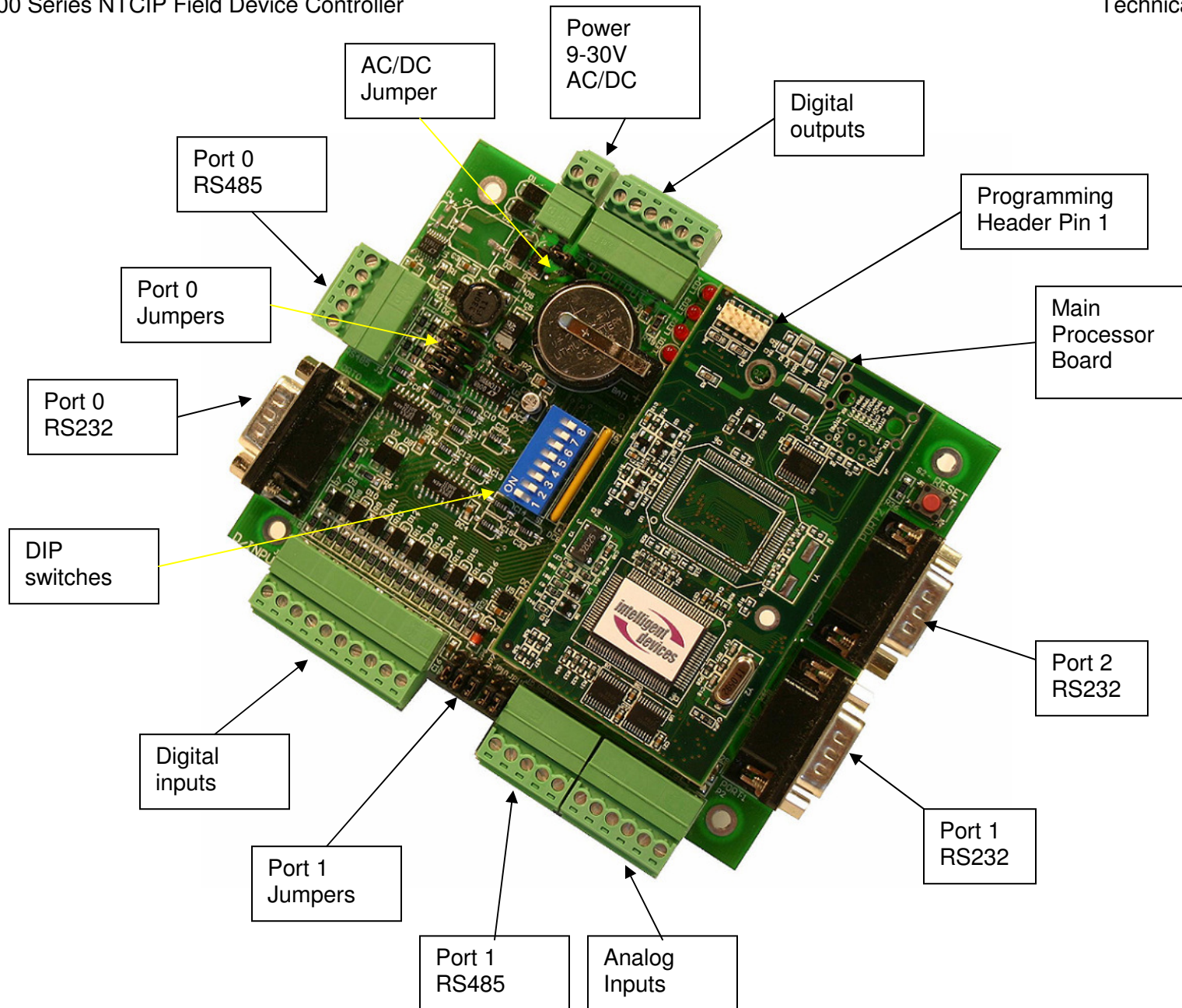
8.1. Hardware

| | |
|---|--|
| Module Size (overall, including connectors) | 5.7" x 4.8" x .6" 144mm x 122mm x 18mm |
| Attachment | Qty 4 0.156" (4mm) holes |
| Operating Temperature: | -40C to +74C |
| Humidity | 5-95% non-condensing |
| Power Requirements | 9-30 V AC or DC |
| Digital I/O | 8 inputs 4 outputs, 100 mA max. |
| Analog Inputs | 4 inputs – 12 bit accuracy |
| Processor Speed | 22.1 MHz |
| SRAM | 512 kB (standard) |
| FLASH | 512 kB (standard) |
| FLASH Memory (1320, 1321 models only) | 16 MB data storage |
| Serial Ports (1300) | 3 total 1 – RS232 full hardware flow control 2 – RS232 full hardware flow control or 4-wire RS485 |
| Serial Ports (1320) | 4 total 2 – RS232 full hardware flow control 2 – RS232 full hardware flow control or 4-wire RS485 |
| Watchdog Supervisor | Yes |
| Time / Date Clock | Yes |
| Battery Backup | Yes |
| Temperature Sensor | Yes |
| LED | 4 – Heartbeat, RX, TX, Diagnostics |
| Switches | Reset 8 Position DIP |
| Ethernet (1301, 1321 models only) | 10BaseT with 2 diagnostic LEDs |

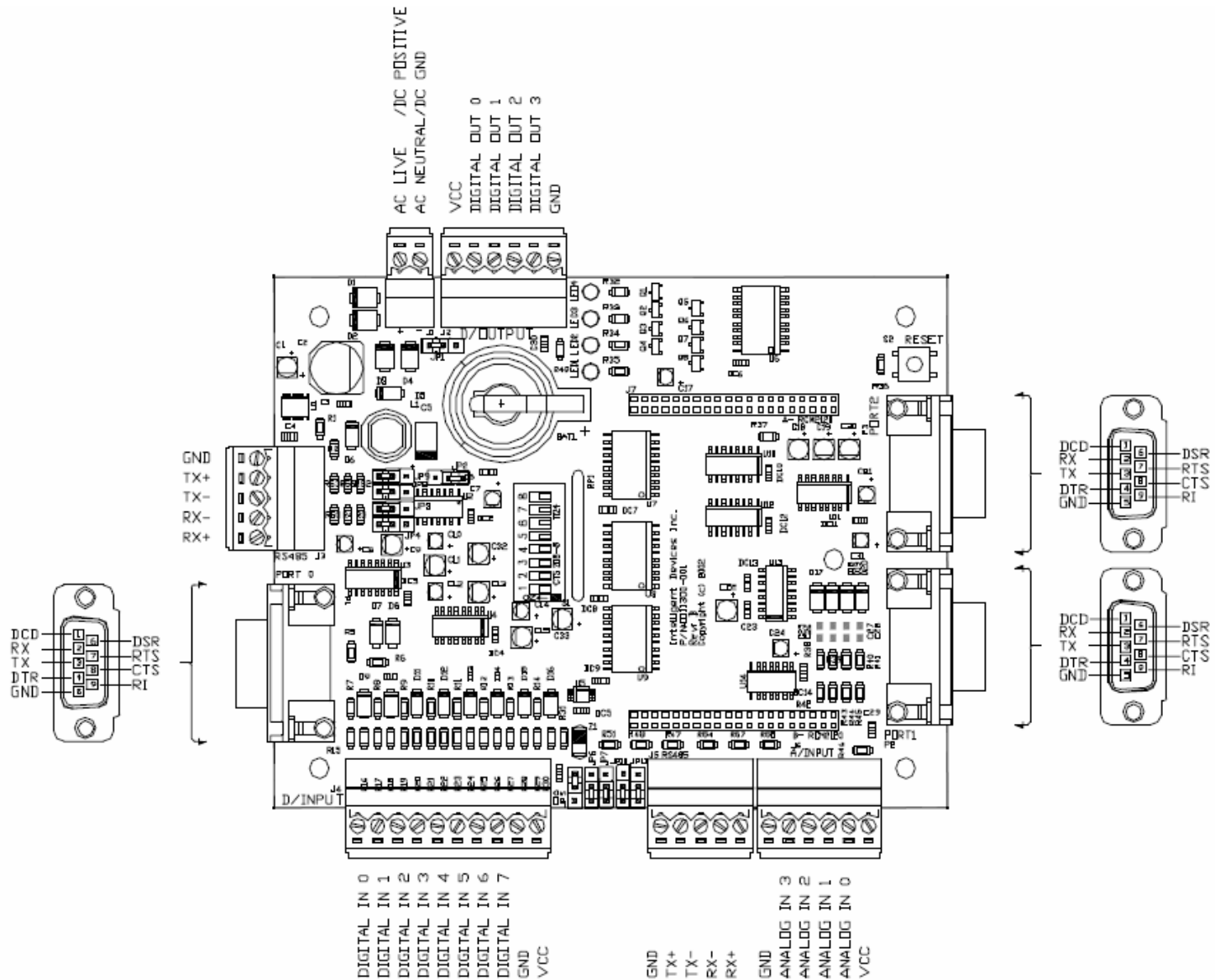
8.2. Software

Protocol Stacks Supported

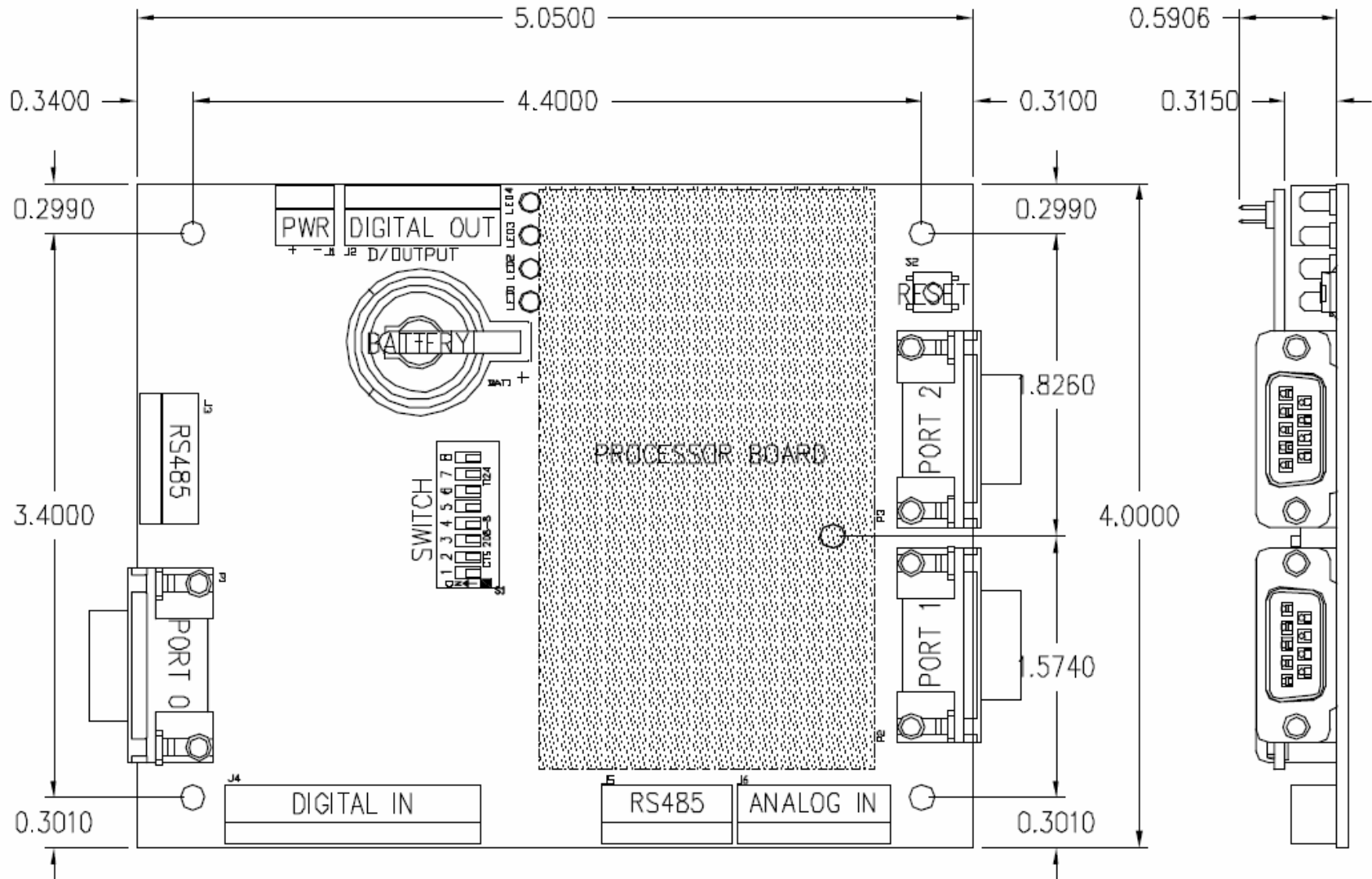
| | |
|----------------|--|
| Direct Connect | Data Objects -> SNMP -> Null -> PMPP -> Twisted Pair |
| Ethernet | Data Objects -> SNMP -> UDP/IP -> Ethernet |



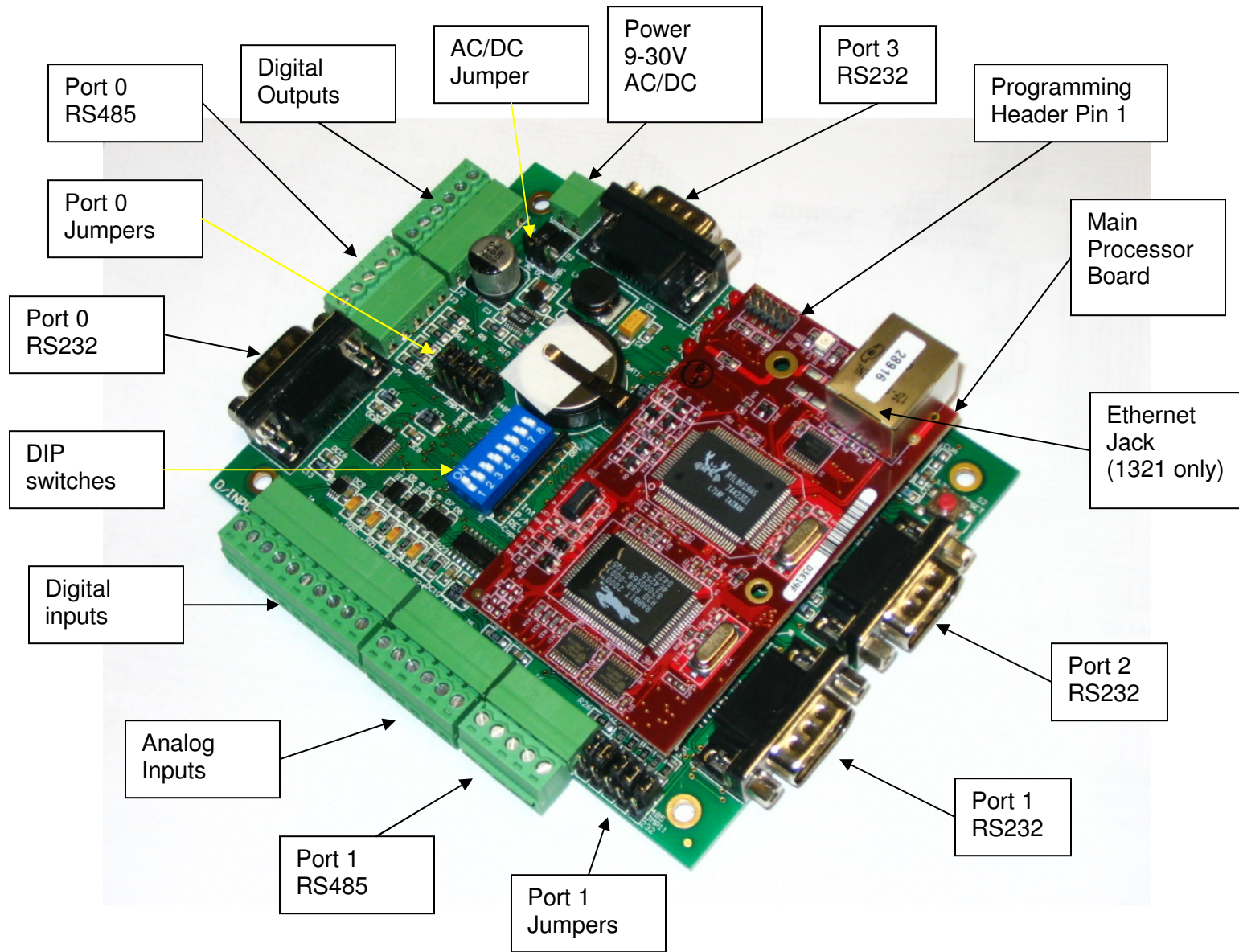
IDI 1300 Controller - Parts Locations



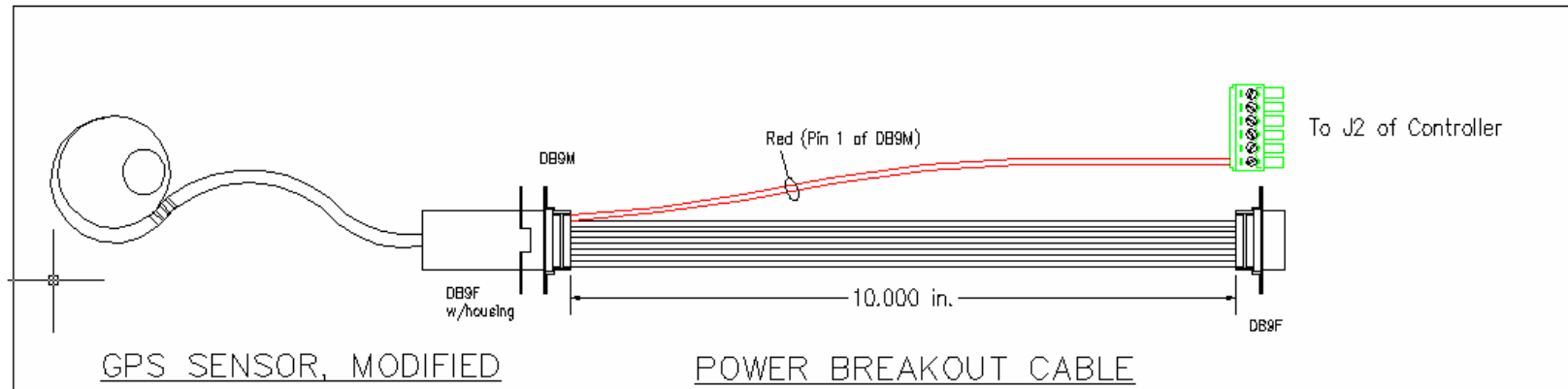
IDI 1300 Controller – Cable Connector Details



IDI 1300 Controller - Physical Dimensions



IDI 1320 Controller - Parts Locations



GPS SENSOR, MODIFIED

POWER BREAKOUT CABLE

TABLE 1 – GPS Sensor Modifications

| Color | DB9F Pin# | Signal |
|--------|-----------|------------------------|
| Yellow | Not used | PPS (pulse per second) |
| Red | 1 | Vin (+5VDC) |
| Black | 5 | Ground |
| White | 2 | TXD |
| Black | 5 | Ground |
| Green | 3 | RXD |

INSTRUCTIONS

1. Remove six pin connector from end of GPS cable.
2. Strip 1/8" (3mm) of insulation from end of all wires except yellow.
3. Attach wires to DB9F connector as indicated in Table 1.
4. Install housing over connector, making sure that cable clamp is secure over outer jacket of cable, not over individual wires.
5. For proper operation, unit must be connected to Power Breakout Cable which provides +5VDC.
6. Power Breakout Cable must be connected to controller that has been modified to provide +5VDC without a resistor. See Table 2 for details of which resistor to replace with 0 ohm resistor (or wire jumper).
7. Unit can be tested by connecting to serial port of PC along with source of +5VDC to pin 1. Communications is 4800 baud, 8N1. Note that unit will not work indoors, and so should be placed outside window or door.

TABLE 2 – Controller Modifications

| Controller | Connector | Resistor |
|------------|-----------|-------------|
| 130x: | J2 pin 6 | R49 = 0 ohm |
| 132x: | J2 pin 6 | R34 = 0 ohm |
| 16xx: | J2 pin 6 | R62 = 0 ohm |

| | | | |
|-----------------|---------------|-------|----------|
| Drawn By: | S. Markusoff | Date: | 4May2007 |
| Approved By: | R. Brookshire | Date: | 4May2007 |
| Revision: | A | Size: | 8.5"x11" |
| Scale: | N.T.S. | | |
| Project Number: | 223-00001 | | |

| | |
|----------------|--------------------------------|
| Drawing Title: | Garmin GPS18LVC Wiring Diagram |
| Client: | STANDARD |

Intelligent Devices Inc.
3441-A, Lonsdale Rd, Suwanee, GA 30088

GPS Sensor Wiring Diagram